

PSNext is a fully featured and exceptionally easy to use enterprise Project and Portfolio Management (PPM) solution, giving you full insight into all your projects and resources across the enterprise.

If you are managing multiple projects with many teams in different locations, you should be using PSNext.



**Management
Planning
Systems**

PSNext

sciforma
CORPORATION

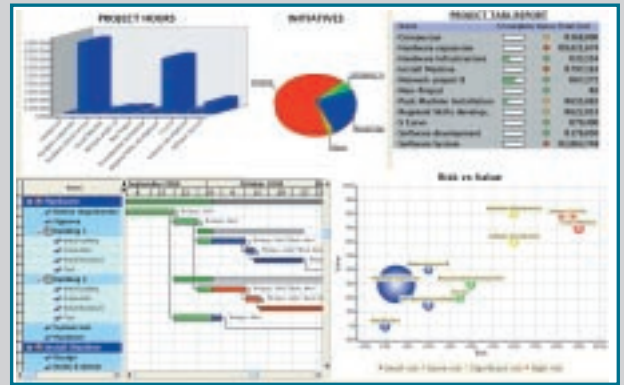
Sciforma's Rich Heritage: Sciforma Corp. has released a long line of award winning project management solutions, starting with Project Scheduler 1 (PS1) in the early 1980's up to PS8 in 2000. By far the most significant release was that of PSNext which is using the latest technology, benefiting from 20 years of project management and software development experience.

Decisive Dashboards

Executives need to see the whole picture and be in touch with potential problems.

With PSNext – no problem.

The PSNext report writer is one of the most amazing reporting systems ever developed to communicate with executives. Text and graphic objects are combined to provide truly useful dashboards with detail drill-down to any level.

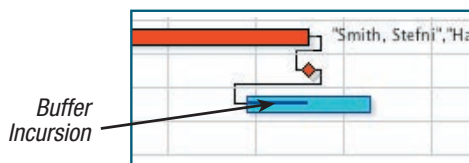


The PSNext report writer allows executives to gain an overview using a mixture of text and graphic objects on one screen. Executives are able to click on various elements to drill down into more detail.

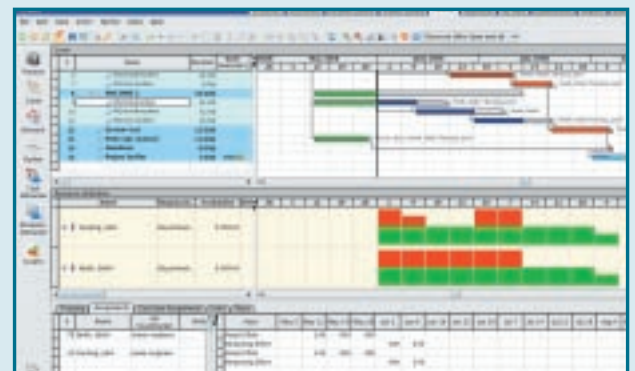
Rich Project Management

Not only does PSNext contain a highly developed set of integrated project management tools (Gantt, PERT, WBS, etc.), but it also offers an impressive list of additional features to simplify the job of the project manager.

- **Easy resource analysis.** Project Managers can instantly view up-to-date resource utilisation across the entire enterprise for all projects.
- **Work Packages (WPs).** Ideal for a multi-disciplinary projects where many managers from different disciplines can work on the same project at the same time, each on their own WPs.
- **Risk analysis.** By ignoring risks, your project could easily run into trouble. PSNext has a built-in professional risk-analysis utility which uses a Monte Carlo simulation to calculate the contingency, thus producing a more realistic project plan. During project execution, buffer incursion graphically depicts the schedule status.



The Buffer is automatically calculated based on the risks in the project. Any slippage is clearly indicated as Buffer Incursion.



PSNext contains all the tools a project manager needs in order to do the job. This screen shows a Gantt chart, a resource utilisation graph and resource details for one of the tasks.

Remarkable Resource Management

In many organizations, resources are owned by resource managers and assigned temporarily to projects based upon project needs. PSNext provides comprehensive support for this structure.

Project managers submit resource requests to which resource managers respond and send back a proposed resource solution. If accepted, a contract between the resource manager and the project manager is concluded whereby resources are placed in a project specific resource pool.

This approach encourages solid project delivery by eliminating a major problem where resources are promised, but not made available when needed by a project manager.

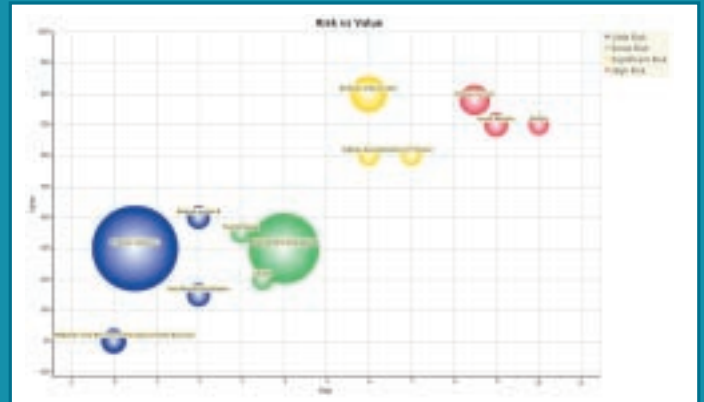
Powerful Portfolio Management

The PSNext Portfolio Management component provides a number of innovative tools to help management define the correct mix and sequencing of projects.

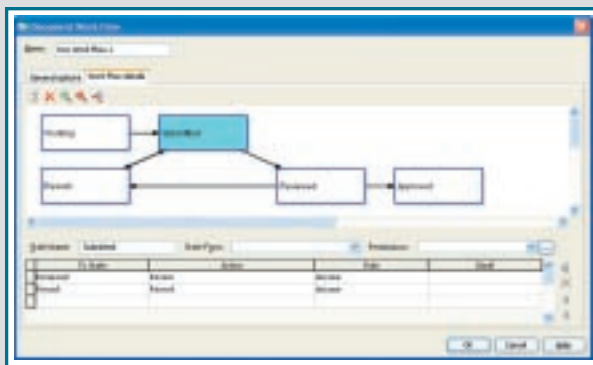
- A multi-level portfolio structure contains 'candidate' projects. These candidate projects are assigned user-defined criteria such as organisational alignment, value, risks, priorities, costs, etc.
- Resources (including generic resources such as skills) can be assigned to candidate projects to obtain a high-level view of resource requirements.
- In order to determine the optimum project portfolio, a unique impartial ranking system taps the invaluable experience of various users to individually rank projects based on the user-defined criteria. This avoids committee dynamics which does not produce optimum results.
- These rankings are then automatically consolidated by the portfolio manager to help determine the optimum project portfolio.



Managers are able to 'rank' projects based on criteria such as Value, Risk, Cost, etc. with simple drag-and-drop actions.



The ranking process feeds reports such as a Bubble chart, to allow the comparison of candidate projects to determine the optimum portfolio of projects.



Documents, Issues and Risks are routed using a full blown workflow engine. Workflows are created using a graphic interface and customisable 2D forms for each step.

Full Blown Workflow Documents, Issues & Risks

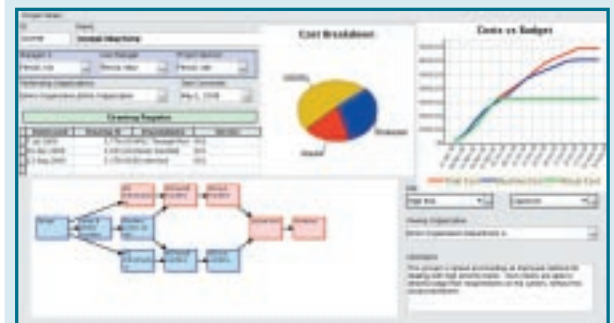
PSNext incorporates a fully fledged Document, Issue and Risk control system. With a click users are able to view the latest version of documents linked to projects, tasks or teams.

- History of document changes and old versions are visible. This shows who changed the document, what was changed and when.
- Permissions control whether users are able to view or change the Document, Issue or Risk.
- Documents, Issues and Risks are integrated with the PSNext workflow engine. For each step along the workflow, selected participants are notified via e-mail and can update, approve or only view information - all done via customizable forms.

Fantastic Flexibility

PSNext is probably unmatched with regards to flexibility and customisation.

- **Unlimited user-defined tables.** This major feature of PSNext allows users to add any data item in PSNext. For example, you could :
 - Add a list of orders for each project, then add a list of deliveries for each order.
 - Or you could add a list of drawings linked to a task.
 - A list of qualifications for each resource.
 The potential is endless. And you are able to use the incredible power of the PSNext report writer to generate great reports which cover these tables combined with other data.
- **Unlimited custom fields and formulas.** Fields have a rich variety, such as text, date, duration, effort, %, etc. In addition, fields can be spread over time, for example, a budget that is linked to several quarters.
- **Customised input forms.** All forms can be fully customised with fields, reports and user-defined tables. There is no need for project managers to view separate reports, as reports are integrated with input screens.



All user defined forms could contain, not only data input fields, but also user-defined tables, graphs and other data. For example, managers are able to view reports while updating project information on the same form. In this example, the Drawing Register (see green box) is a user-defined table linked to this project

Excellent Ease of Use

An easy to use system is not a luxury. It is essential for success.

The implementation of PPM systems, such as PSNext, always face resistance from users. However, PSNext implementations tend to go smoothly, why:

- **Role based** – PSNext supports various roles, such as Resource manager, PSO, Project manager, Line manager, Team member, etc. Each user only sees the functionality needed for his/her role. No unnecessary functions to confuse users.
- **Integrated** – Compared to competitive systems, which contain many different components, PSNext is one integrated system. For example, the PSNext scheduler is not an add-on product with add-on problems. This makes a huge difference to ease of use.
- **Totally Rewritten** – Based on 20 years of experience, Sciforma totally re-developed PSNext from the ground up, resulting in simplification in all aspects of the system.
- **Look & Feel** – The user can drag windows to achieve the desired view of data and may include multiple windows on the same screen. The view may be saved for instant recall.



Internet or Intranet

Java Application Server

Database

Simple PSNext Architecture

Simple architecture makes PSNext simple to implement and easy to use. Due to low processing demands, a single server is usually sufficient for running the Application Server as well as the Database.

Other Key Benefits

- **Timesheets** – The comprehensive timesheet system in PSNext can be customised to capture not only hours, but any other data item, such as kilometers, accommodation, any quantity, etc.
- **Progress updates** – vendors and clients are able to remotely update progress on their work.
- **Security** – multi-dimensional security covering people, projects, documents, reports, etc. – right down to field-level security.
- **Customisable e-mail** – for example, the project sponsor can be automatically notified if one of his projects is more than 10% over budget.
- **Off-line Planning** – Project Managers can work off-line when the network is not available.
- **E-mail timesheets** – for users who need to capture time behind customer fire-walls or in low-bandwidth conditions.
- **Multi-currency and multi-language.**
- **Tokens** – PSNext uses a unique token based pricing system - you only pay for the components you use. Different roles require different amounts of tokens.

Technical Features

- PSNext was developed in J2EE and supports automatic deployment of new versions. Uses a rich client to minimise web traffic.
- Runs on Windows, Apple or Linux workstations.
- Runs on Windows or Linux servers.
- Database options include: Oracle, SQL Server and PostgreSQL.
- A comprehensive API library allows links to other systems, such as SAP, Navision, Peoplesoft, etc.
- Data from external tables in other systems can be made visible in PSNext.
- Supports Active Directory.
- Supports POP and MAPI email.
- Any report can be written in PDF format and e-mailed to a clients.
- PSNext is optimised for use by very large organisations with very large data volumes.

Unique Power Features

PSNext contains many unique features to better manage projects. For example, a project can be broken down into Work Packages (WPs). Each WP is assigned a WP manager.

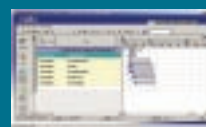
These managers are able to work concurrently on their assigned WPs to plan and track their tasks. Task dependencies can cross WP boundaries to define the complete project network. Importantly, WP managers can open all of their assigned WPs to manage resource allocations within their functional area – ideal for matrix organizations.



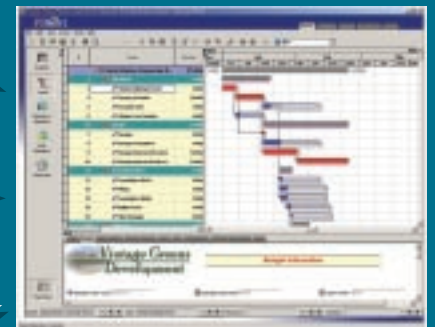
WP1 as seen by manager 1



WP2 as seen by manager 2



WP3 as seen by manager 3



The project as seen by the project manager, which combines WP1, WP2 and WP3, with task dependencies crossing WP boundaries.